

ARMY
NAVY
AIR FORCE

TM 11-6625-3023-24P
ET904-AA-PLL-010/E154 TS3684
TO 33A1-8-901-4-1

**ORGANIZATIONAL, DIRECT SUPPORT, AND GENERAL SUPPORT
MAINTENANCE REPAIR PARTS AND SPECIAL TOOLS LIST
(INCLUDING DEPOT MAINTENANCE REPAIR PARTS AND SPECIAL TOOLS)
FOR
TEST SET, ELECTRIC SURGE ARRESTOR TS-3684/T
(NSN 5895-01-044-5332)**

This publication has been printed by the
UNITED STATES ARMY PUBLICATIONS CENTER,
ST. LOUIS, MISSOURI, to meet your needs
on a timely basis.

TECHNICAL MANUAL
 No. 11-6625-3023-24P
 TECHNICAL MANUAL
 ET904-AA-PLL-010/E154 TS3684
 TECHNICAL ORDER
 No. 33A1-8-901-4-1



WASHINGTON, DC, 7 February 1985

**ORGANIZATIONAL, DIRECT SUPPORT, AND GENERAL SUPPORT
 MAINTENANCE REPAIR PARTS AND SPECIAL TOOLS LIST
 (INCLUDING DEPOT MAINTENANCE REPAIR PARTS AND SPECIAL TOOLS)
 FOR
 TEST SET, ELECTRIC SURGE ARRESTOR TS-3684/T
 (NSN 5895-01-044-5332)**

Current as of 7 November 1984

REPORTING ERRORS AND RECOMMENDING IMPROVEMENTS

You can help improve this manual. If you find any mistakes or if you know of a way to improve the procedures, please let us know. Mail your letter, DA Form 2028 (Recommended Changes to Publications and Blank Forms), or DA Form 2028-2 located in back of this manual direct to: Commander, US Army Communications-Electronics Command and Fort Monmouth, ATTN: AMSEL-M MP, Fort Monmouth, NJ 07703-5007.

For Air Force; submit AFTO Form 22 (Technical Order System Publication Improvement Report and Reply) in accordance with paragraph 6-5, Section VI, T.O. 00-5-1. Forward direct to prime ALC/MST.

For Navy, mail comments to the Commander, Naval Electronics Systems Command, ATTN: ELEX 8122, Washington, DC 20360

In either case, a reply will be furnished direct to you.

Table of Contents

			Page	Illus Figure
SECTION	I.	Introduction.....	1	
	II.	Repair Parts List	1-1	
GROUP	00	Test Set, Electric Surge Arrestor, TS-3684T	1-1	1
	01	Panel Assembly B4003749	2-1	2
	02	Printed Circuit Board Assembly, B4003754	3-1	3
SECTION	III.	Special Tools List (Not applicable)		
	IV.	National Stock Number and Part Number Index	I-1	

SECTION I

INTRODUCTION

1. Scope

This manual lists and authorizes spares and repair parts; special tools; special test, measurement, and diagnostic equipment (I'MDE); and other special support equipment required for performance of organizational, direct support, and general support maintenance of the TS-3684IT. It authorizes the requisitioning, issue, and disposition of spares, repair parts and special tools as indicated by the source, maintenance and recoverability (SMR) codes.

2. General

This Repair Parts and Special Tools List is divided into the following sections:

- a. *Section II. Repair Parts List.* A list of spares and repair parts authorized by this RPSTL for use in the performance of maintenance. This list also includes parts which must be removed for replacement of the authorized parts. Parts lists are composed of functional groups in ascending numeric sequence, with the parts in each group listed in ascending item number sequence. Figure numbers are listed directly beneath the group header.
- b. *Section III. Special Tools List. Not applicable.*
- c. *Section IV. National Stock Number and Part Number Index.* A list, in National item identification number (NIMh4 sequence, of all National stock numbered items appearing in the listing, followed by a list in alphameric sequence of all part numbers appearing in the listings. National stock numbers and part numbers are cross-referenced to each illustration figure and item number appearance.

3. Explanation of Columns (Section II and III)

- a. *Item No. (Column 1).* Indicates the number used to identify items called out in the illustration.
- b. *SMR Code (Column 2).* The source, maintenance, and recoverability (SMR) code is a five-position code containing supply/requisitioning information, maintenance category authorization criteria, and disposition instruction, as shown in the following breakout:

Source Code	Maintenance Code	Recoverability Code
<div style="border: 1px solid black; padding: 2px; display: inline-block;">XX</div> 1st two positions	<div style="border: 1px solid black; padding: 2px; display: inline-block;">XX</div> 3rd position	<div style="border: 1px solid black; padding: 2px; display: inline-block;">X</div> 4 th position
How you get an item	Who can install, replace, or use the item	Who determines disposition action on an unserviceable item

NOTE

Complete repair: Maintenance capacity, capability, and authority to perform all corrective maintenance tasks of the 'Repair' function in a use/user environment in order to restore serviceability to a failed item.

- (1) *Source code.* The source code tells you how to get an item needed for maintenance, repair, or overhaul of an end item/equipment. Explanations of source codes follows:

Code

Explanation

PB
PC
PD
PE
PF
PG

Stocked items: use applicable NSN to request and/or requisition items with these source codes. They are authorized to the category indication by the code entered in the third position of the SMR code

NOTE

Items coded PC are subject to deterioration.

KB
KD
KF

Items with these codes are not to be requested and/or requisitioned individually. They are part of a kit which is authorized to the maintenance category indicated in the third position of the SMR code. The complete kit must be requisitioned and applied.

MO - Made at Org/AVUM category
MF - Made at DS/AVIM category
MH - Made at GS category
ML - Made at Specialized Repair Activity (SRA)
MD - Made at Depot

Items with these codes are not to be requested and/or requisitioned individually. They must be made from bulk material which is identified by the part number in the description and usable on code (UOC) column and listed in the Bulk Material group of the repair parts list. If the item is authorized to you by the third position code of the SMR code, but the source code indicates it is made at a higher category, order the item from the higher category of maintenance.

AO - Assembled by Org/AVUM category
AF - Assembled by DS/AVIM category
AH - Assembled by GS category
AL - Assembled by SRA
AD - Assembled by Depot

Items with these codes are not to be requested and/or requisitioned individually. The parts that make up the assembled item must be requisitioned or fabricated and assembled at the category of maintenance indicated by the source code. If the third position code of the SMR code authorizes you to replace the item, but the source code indicates the item is assembled at a higher category, order the item from the higher category of maintenance.

XA-Do not requisition an "XA" coded item. Order its next higher assembly.

XB-If an "XB" item is not available from salvage, order it using the FSCM and part number-given.

XC-Installation drawing, diagram, instruction sheet, field service drawing, that is identified manufacturers part number.

XD-Item is not stocked. Order an 'XD' coded item through normal supply channels using the FSCM and part number given, if no NSN is available.

NOTE

Cannibalization or controlled exchange, when authorized, may be used as a source of supply for items with the above source codes, except for those source coded 'XA' or those aircraft support items restricted by requirements of AR 750-1.

(2) *Maintenance code.* Maintenance codes tell you the category of maintenance authorized to USE and REPAIR support items. The maintenance codes are entered in the third and fourth positions of the SMR code as follows:

(a) The maintenance code entered in the third position tells you the lowest maintenance category authorized to remove, replace, and use an item. The maintenance code entered in the third position will indicate authorization to one of the following categories of maintenance.

Code

Application/Explanation

C- Crew or operator maintenance done within organizational or aviation maintenance.

O- Organizational or aviation unit category can remove, replace, and use the item.

<i>Code</i>	<i>Application/Explanation</i>
F-Direct support or aviation intermediate category can remove, replace, and use the item.	
H-General support category can remove, replace, and use the item.	
L- Specialized repair activity can remove, replace, and use the item.	
D-Depot category can remove, replace, and use the item.	

(b) The maintenance code entered in the fourth position tells whether or not the item is to be repaired and identifies the lowest maintenance category with the capability to do complete repair (i.e., perform all authorized repair functions) This position will contain one of the following maintenance codes.

NOTE

Some limited repair may be done on the item at a lower category of maintenance, if authorized by the Maintenance Allocation Chart (MAC) and SMR codes.

<i>Code</i>	<i>Application/Explanation</i>
0-Organizational or aviation unit is the lowest category that can do complete repair of the item.	
F-Direct support or aviation intermediate is the lowest category that can do complete repair of the item.	
H-General support is the lowest category that can do complete repair of the item.	
L-Specialized repair activity (designate the specialized repair activity) is the lowest category that can do complete repair of the item.	
D-Depot is the lowest category that can do complete repair of the item.	
Z-Nonreparable. No repair is authorized.	
B- No repair is authorized. (No parts or special tools are authorized for the maintenance of a 'B' coded item). However, the item may be reconditioned by adjusting, lubricating, etc., at the user category.	

(3) *Recoverability code.* Recoverability codes are assigned to items to indicate the disposition action on unserviceable items. The recoverability code is entered in the fifth position of the SMR Code as follows:

<i>Recoverability codes</i>	<i>Application/Explanation</i>
Z-Nonreparable Item. When unserviceable, condemn and dispose of the item at the category of maintenance shown in the third position of SMR Code.	
0- Repairable item. When uneconomically repairable, condemn and dispose of the item at organizational or aviation unit category.	
F-Repairable item. When uneconomically repairable, condemn and dispose of the item at direct support or aviation intermediate category.	
H-Repairable item. When uneconomically repairable, condemn and dispose of the item at general support category.	
D-Repairable item. When beyond lower category repair capability, return to depot. Condemnation and disposal of item not authorized below depot category.	
L-Repairable item. Condemnation and disposal not authorized below specialized repair activity (SRA).	
A-Item requires special handling or condemnation procedures because of specific reasons (e.g., precious metal content, high dollar value, critical material, or hazardous material). Refer to appropriate manuals/directives for specific instructions.	

c. *FCM(Column (3)).* The Federal Supply Code for Manufacturer (FSCM) is a 5-digit numeric code which is used to identify the manufacturer, distributor, or Government agency, etc., that supplies the item.

d. *Part Number (Column (4)).* Indicates the primary number used by the manufacturer (individual, company, firm, corporation, or Government activity), which controls the design and characteristics of the item by means of its engineering drawings, specifications, standards, and inspection requirements to identify an item or range of items.

NOTE

When you use a NSN to requisition an item, the item you receive may have a different part number from the part ordered.

e. *Description and Usable on Code (UOC) (Column (5)).* This column includes the following information.

(1) The Federal item name and, when required, a minimum description to identify the item.

(2) The statement "END OF FIGURE" appears just below the last item description in Column (5) for a given figure in both section II and section III.

f. *Qty (Column (6)).* Indicates the quantity of the item used in the breakout shown on the illustration figure, which is prepared for a functional group, subfunctional group, or an assembly. A "V, appearing in this column in lieu of a quantity indicates that the quantity is variable and the quantity may vary from application to application.

4. Explanation of Columns (Section IV)

a. *National Stock Number (NE) Index.*

(1) Stock number column. This column lists the NSN by National item identification number (MIN) sequence.

The NIIN consists of the last nine digits of the NSN. When using this column to locate an item, ignore the first four digits of the NSN. When requisitioning items use the complete NSN (13 digits).

(2) Fig. column. This column lists the number of the figure where the item is identified/located. The illustrations are in numerical sequence in sections II and III.

(3) Item column. The item number identifies the item associated with the figure listed in the adjacent Fig. column. This item is also identified by the NSN listed on the same line.

b. Part Number Index. Part numbers in this index are listed by part number in ascending alphameric sequence.

(1) FSCM column. This column lists the Federal supply code for manufacturer (FSCM).

(2) Part number column. This column indicates the part number assigned to the item.

(3) Stock number column. This column lists the National stock number for the associated part number and manufacturer identified in the part number and FSCM columns to the left.

(4) Fig. column. This column lists the number of the figure where the item is identified/located in sections II and m.

(5) Item column. The item number is that number assigned to the item as it appears in the figure referenced in the adjacent figure number column.

5. Special Information

a. *Associated Publications.* The publications listed below pertain to the TS-3684iT and its components:
TM 11-6625-3023-14, Test Set, Electric Surge Arrestors TS-3684/T

b. National Stock Numbers. National stock numbers (NSN's) that are missing from P source coded items have been applied for and will be added to this TM by future change/revision when they are entered in the Army Master Data File (AMDF). Until the NSN's are established and published, submit exception requisitions to: Commander, US Army Communications-Electronics Command and Fort Monmouth, ATTN: AMSEL-MM, Fort Monmouth, NJ 07703-5006 for the part required to support your equipment.

6. How to Locate Repair Parts

a. When National stock number or part number is not known.

(1) First. Using the table of contents, determine the assembly group or subassembly group to which the item belongs. This is necessary since figures are prepared for assembly groups and subassembly groups, and listings are divided into the same groups.

(2) Second. Find the figure covering the assembly group or subassembly group to which the item belongs.

(3) Third. Identify the item on the figure and note the item number.

(4) Fourth. Refer to the Repair Parts List for the figure to find the part number for the item number noted on the figure.

(5) Fifth. Refer to the Part Number Index to find the NSN, if assigned.

b. When National stock number or part number is known.

(1) First. Using the index of National stock numbers and part numbers, find the pertinent National stock number or part number. The NSN index is in National item identification number (NIIN) sequence (para 4a(1)). The part numbers in the part number index are listed in ascending alphameric sequence (para 4b). Both indexes cross-reference you to the illustration figure and item number of the item you are looking for.

(2) Second. After finding the figure and item number, verify that the item is the one you're looking for, then locate the item number in the repair parts list for the figure.

7. Abbreviations

Not applicable.

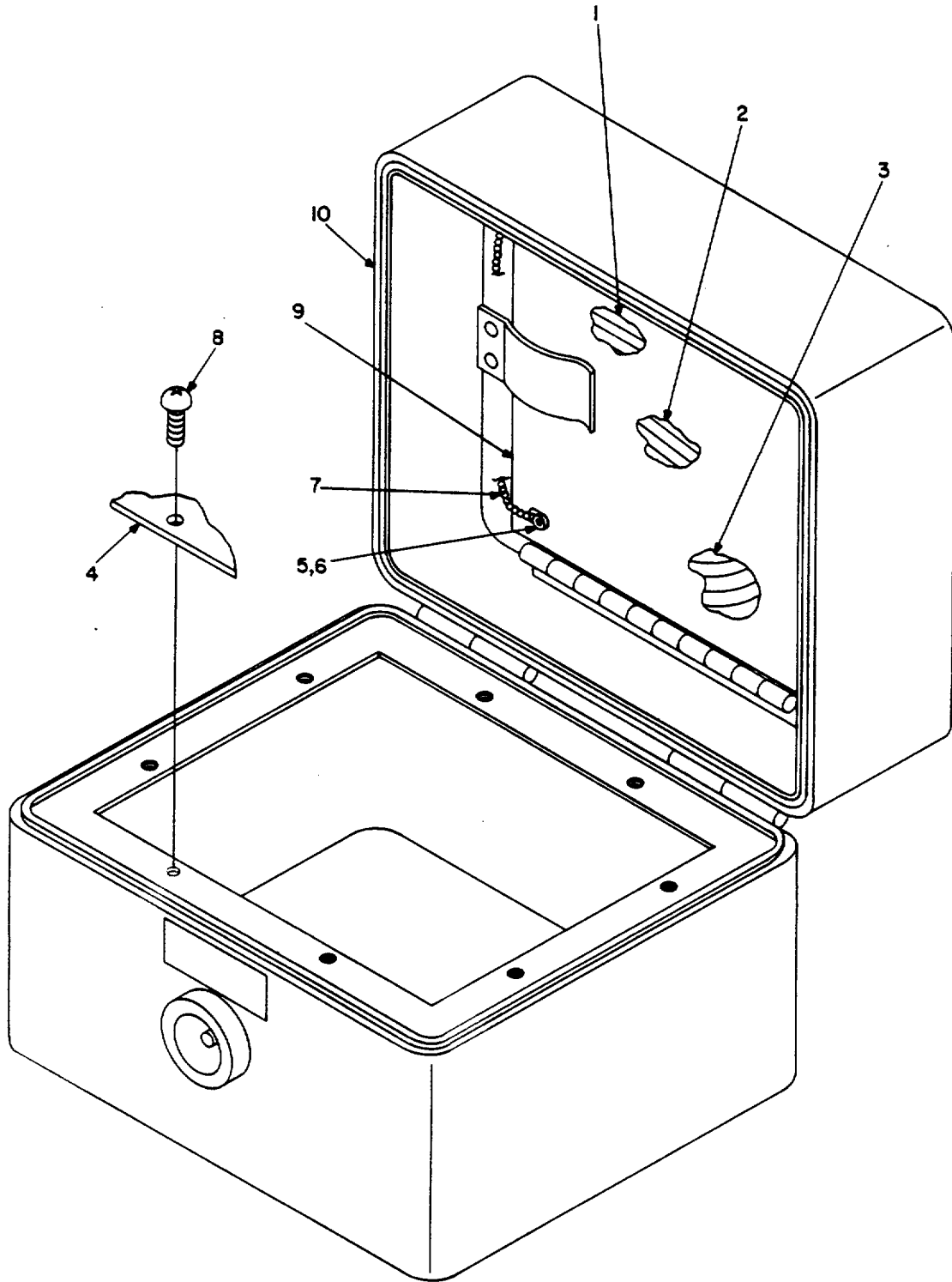
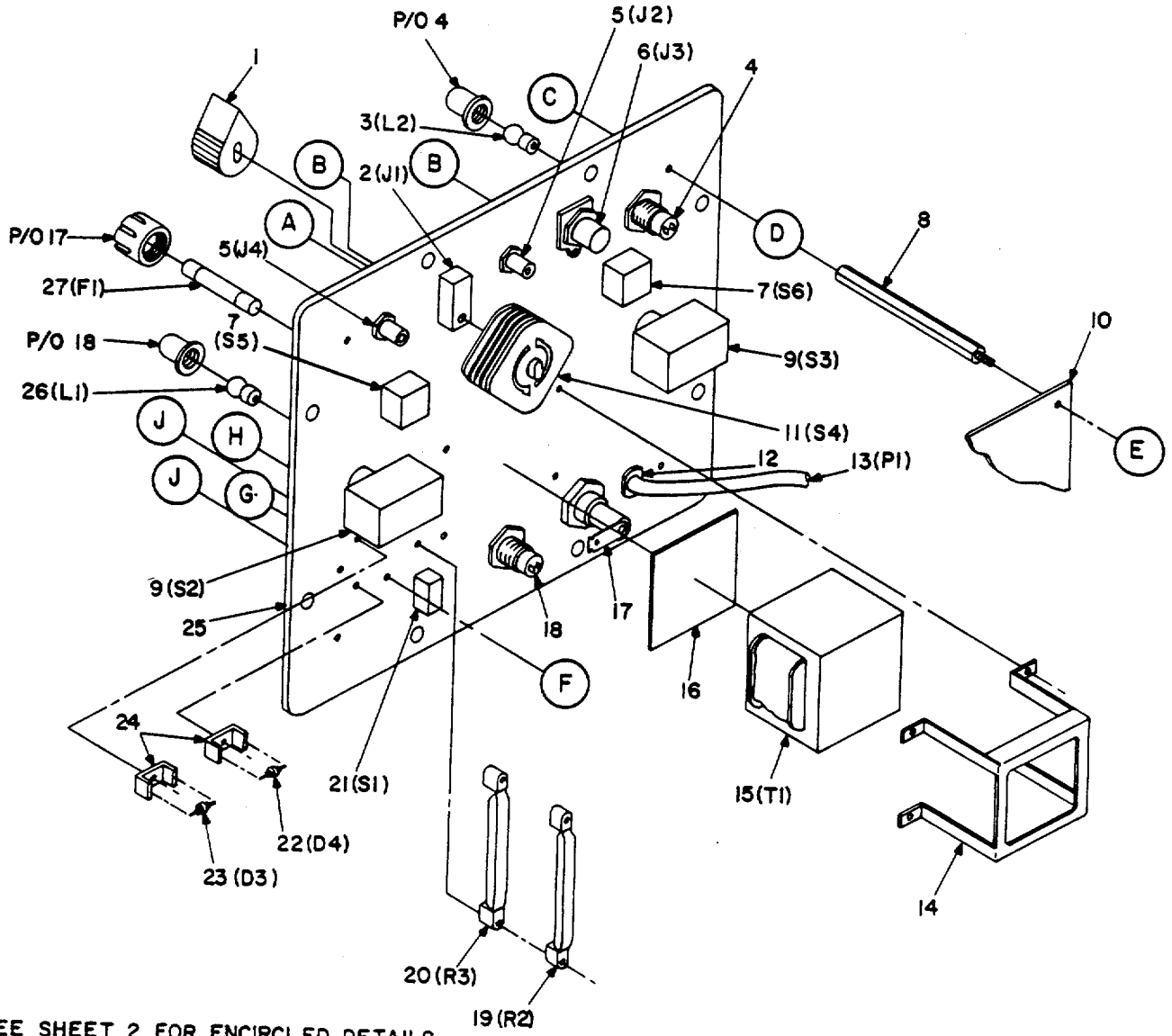


Figure 1. Test Set, Electric Surge Arrester TS-3684/T

EL6GA00I

(1) ITEM NO	(2) SMR CODE	(3) FSCM	(4) PART NUMBER	(5) DESCRIPTION AND USABLE ON CODE (UOC)	(6) QTY
				GROUP 00 TEST SET , ELECTRIC SURGE ARRESTOR TS-3684/T	
				FIGURE. 1	
1	PAOZZ	05276	1959-36	LEAD, TEST.....	1
2	PAOZZ	82389	TT-126	CORD ASSEMBLY, ELECT.....	1
3	PAOZZ	14949	PTW-36-78	TEST CABLE	1
4	XBOHH	56996	B4003749	PANEL ASSEMBLY	1
5	PAHZZ	96906	MS20470A3-3	RIVET, SOLID.....	2
6	PAHZZ	96906	MS15795-806	WASHER, FLAT	1
7	XBHZZ	14278	N06-5-3/4-6D	CHAIN	1
8	PAOZZ	96906	MS51957-45	SCREW, MACHINE.	8
9	XBOZZ	56996	B4003753	INSTRUCTION CARD	1
10	PAHZZ	56996	B4003745	CASE, COMBINATION.....	1

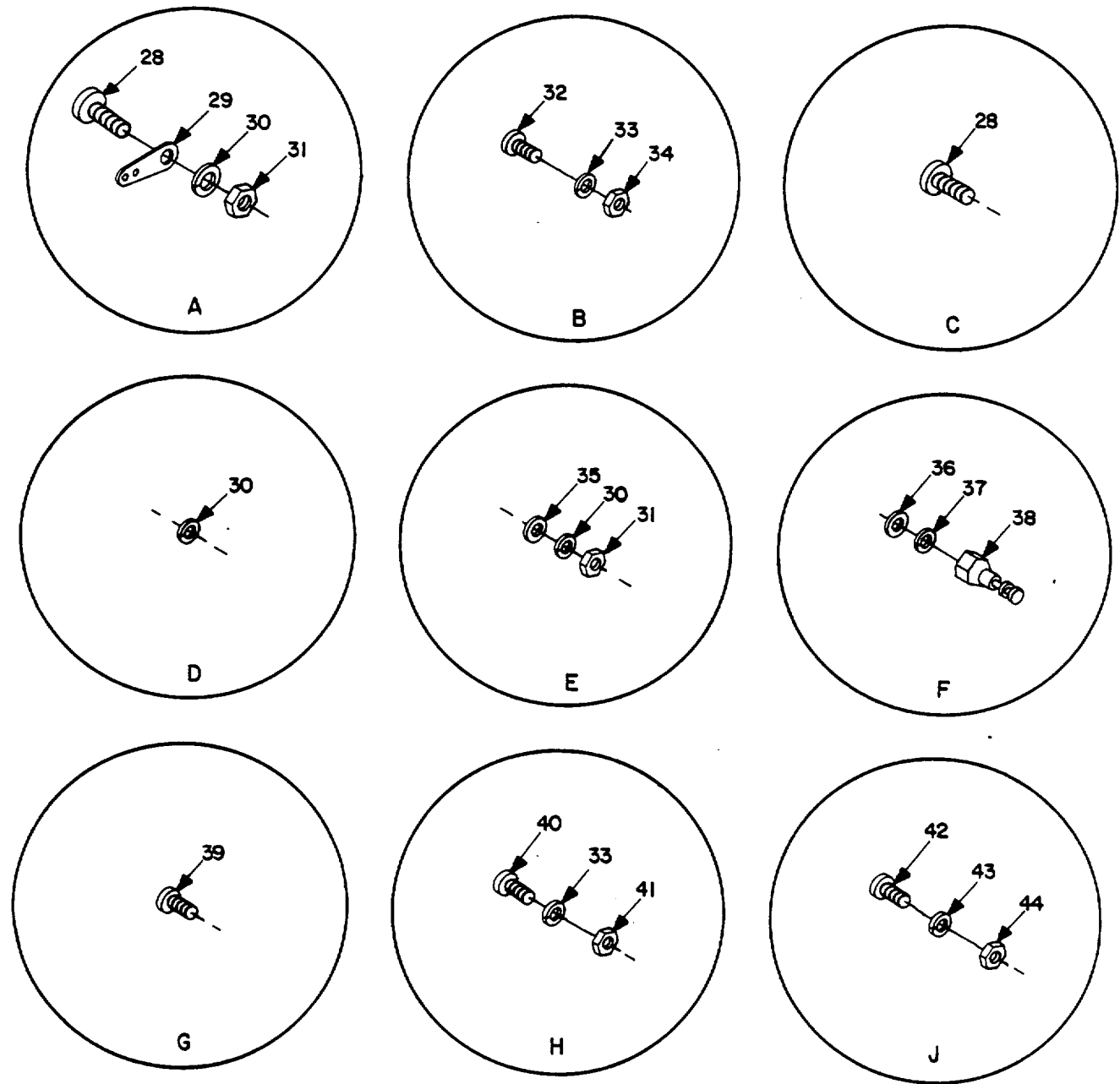
END OF FIGURE



SEE SHEET 2 FOR ENCIRCLED DETAILS.

EL6GA002

Figure 2. Panel Assembly B4003749 (Sheet 1 of 2).

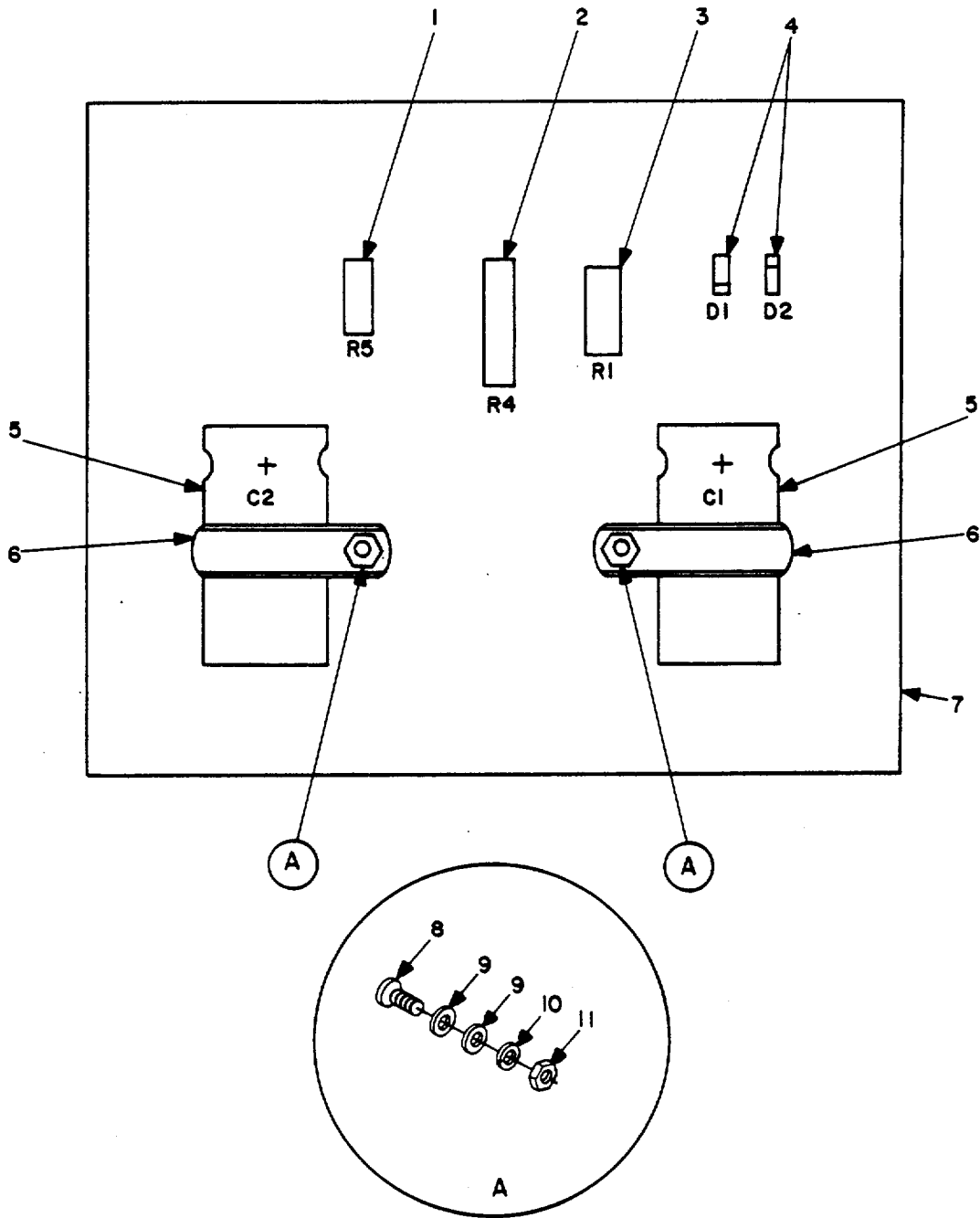


EL6GA003

Figure 2. Panel Assembly B4003749 (Sheet 2 of 2).

(1) ITEM NO	(2) SMR CODE	(3) FSCM	(4) PART NUMBER	(5) DESCRIPTION AND USABLE ON CODE (UOC)	(6) QTY
GROUP 01 PANEL ASSEMBLY					
FIGURE. 2					
1	PAHZZ	96906	MS91528-IP2B	KNOB	1
2	PAHZZ	82389	TT-32B	JACK, TELEPHONE	1
3	PAOZZ	08806	344	LAMP, INCANDESCENT	1
4	PAOZZ	81349	LH73/1-LC12GN2	LIGHT, INDICATOR	1
5	PAHZZ	83330	1498-102	JACK, TIP	2
6	PAHZZ	14949	J72D	CONNECTOR, RECEPTACL	1
7	PAHZZ	96906	MS75029-23	SWITCH, TOGGLE	2
8	PAHZZ	83330	8262	POST,ELECTRICAL-MEC	4
9	PAHZZ	96906	MS35058-30	SWITCH, TOGGLE	2
10	PAOZD	56996	B4003754	CIRCUIT CARD ASSEMB	1
11	PAHZZ	71590	PA-6012	SWITCH, ROTARY	1
12	PAHZZ	80063	SM-B-552124	BUSHING, STRAIN RELI.....	1
13	PAHZZ	16428	17238	CABLE ASSEMBLY, POWER	1
14	XBHZZ	08779	24BR	BRACKET, TRANSFORMER	1
15	PAHZZ	08779	PC-230-100	TRANSFORMER, POWER.....	1
16	XBHZZ	56996	PADNEOPRENE	PAD, NEOPRENE.....	1
17	PAOZZ	75915	342-104	FUSEHOLDER.....	1
18	PAOZZ	96906	MS25257-4	LIGHT, INDICATOR.....	1
19	PAHZZ	44655	F235	RESISTOR, FIXED, WIRE.....	1
20	PAHZZ	44655	F229	RESISTOR, FIXED, WIRE.....	1
21	PAHZZ	96906	MS75028-22	SWITCH, TOGGLE	1
22	PAHZZ	12969	UZ5114	SEMICONDUCTOR DEVICE.....	1
23	PAHZZ	12969	UZ5136	SEMICONDUCTOR DEVICE.....	1
24	PAHZZ	05820	258	HEAT SINK, ELECTRICA.....	2
25	XBHZZ	56996	84003747	PANEL	1
26	XBOZZ	96906	MIL-L-15098/11-0 001	LAMP9INCANDESCENT	1
27	PAQZZ	07342	B03877	FUSE, CARTRIDGE	1
28	PAHZZ	96906	MS35214-25	SCREW, MACHINE	8
29	PAHZZ	96906	MS77068-2	TERMINAL, LUG.....	1
30	PAHZZ	96906	MS35338-98	WASHER, LOCK.	14
31	PAHZZ	96906	MS35649-265	NUT, PLAIN, HEX.AGON	10
32	PAHZZ	96906	MS51958-15	SCREW, MACHINE	2
33	PAHZZ	96906	MS35338-97	WASHER, LOCK	4
34	PAHZZ	96906	MS35650-344	NUT, PLAIN, HEXAGON	2
35	PAHZZ	96906	MS27183-5	WASHER, FLAT	8
36	PAHZZ	96906	MS27183-4	WASHER, FLAT	3
37	PAHZZ	96906	MS35333-104	WASHER, LOCK.	3
38	PAHZZ	81349	SE109D01	TERMINAL, STUD	3
39	PAHZZ	96906	MS35214-12	SCREW, MACHINE	3
40	PAHZZ	96906	MS35214-19	SCREW, MACHINE	2
41	PAHZZ	96906	MS35649-225	NUT, PLAIN, HEXAGON	2
42	PAHZZ	96906	MS35214-5	SCREW, MACHINE	2
43	PAHZZ	96906	MS35338-96	WASHER, LOCK.	2
44	PAHZZ	96906	MS35649-225	NUT, PLAIN, HEXAGON	2

END OF FIGURE



EL6GA004

Figure 3. Printed Circuit Board Assembly, B4003754.

(1) ITEM NO	(2) SMR CODE	(3) FSCM	(4) PART NUMBER	(5) DESCRIPTION AND USABLE ON CODE (UOC)	(6) QTY
GROUP 02 PRINTED CIRCUIT BOARD ASSEMBLY					
FIGURE. 3					
1	PAHZZ	44655	4442	RESISTOR, FIXED, WIRE.....	1
2	PAHZZ	81349	RWR7451002FR	RESISTOR, FIXED, WIRE.....	1
3	PAHZZ	81349	RCR424G473JS	RESISTOR, FIXED, COMP.....	1
4	PAHZZ	81349	JAN1N4249	SEMICONDUCTOR DEVICE.....	2
5	PAHZZ	81349	CE13C330R	CAPACITOR, FIXED, ELE.....	2
6	PAHZZ	83330	842	CLAMP, LOOP.....	2
7	XBHZZ	56996	MPB10356	PTD WIRING BD.....	1
8	PAHZZ	6906	MS35214-27	SCREW, MACHINE.....	2
9	PAHZZ	96906	MS27183-5	WASHER, FLAT.....	4
10	PAHZZ	96906	MS35338-98	WASHER, LOCK.....	2
11	PAHZZ	96906	MS35649-265	NUT, PLAIN, HEXAGON.....	2

END OF FIGURE

NATIONAL STOCK NUMBER AND PART NUMBER INDEX

STOCK NUMBER	NATIONAL STOCK NUMBER INDEX		STOCK NUMBER	FIG.	ITEM
	FIG.	ITEM			
5305-00-054-6670	1	8	5805-01-131-6365	1	10
5305-00-057-0512	2	32	5950-01-132-1618	2	15
5305-00-059-8244	2	40	5930-01-138-9675	2	11
6150-00-071-1179	2	13	5905-01-145-0406	2	19
5905-00-076-6010	2	20	5920-01-161-8119	2	17
5961-00-082-4073	3	4	5995-01-175-5124	1	3
5905-00-147-9852	3	2			
5310-00-184-8977	2	30			
	3	10			
5310-00-184-8990	2	43	ADDITIONAL NATIONAL STOCK		
5310-00-184-8996	2	33	NUMBER ASSIGNMENT		
5305-00-206-1288	3	8			
5305-00-206-3716	2	28	STOCK NUMBER FIG. ITEM		
6625-00-362-7528	1	1			
5961-00-432-9285	2	22	5905-00-874-0147	3	3
5995-00-437-6140	1	2			
5961-00-465-8224	2	23			
5910-00-466-3550	3	5			
5999-00-492-2123	2	24			
5940-00-615-6475	2	38			
5355-00-616-9604	2	1			
5305-00-637-5884	2	39			
5930-00-655-1522	2	9			
5320-00-721-8973	1	5			
6240-00-722-6467	2	3			
6210-00-724-2447	2	4			
5340-00-767-8078	3	6			
6210-00-808-8604	2	18			
5305-00-812-3549	2	42			
5940-00-827-2653	2	29			
5920-00-878-5571	2	27			
5310-00-880-5976	1	6			
5975-00-926-3073	2	12			
5310-00-934-9740	2	41			
	2	44			
5310-00-934-9763	2	31			
	3	11			
5310-00-938-2012	2	34			
5310-00-939-1061	2	37			
5930-00-943-4957	2	21			
5930-00-947-8318	2	7			
5310-00-950-1310	2	36			
5310-00-983-8483	2	35			
	3	9			
5905-00-994-7292	3	1			
5935-01-013-2410	2	5			
5935-01-017-8155	2	2			
5935-01-057-2703	2	6			
5340-01-077-3555	2	8			
5801-01-129-1518	2	10			

NATIONAL STOCK NUMBER AND PART NUMBER INDEX

FSCM	PART NUMBER	PART NUMBER INDEX		FIG.	ITEM
			STOCK NUMBER		
56996	B4003745		5805-01-131-6365	1	10
56996	B4003747			2	25
56996	B4003749			1	4
56996	B4003753			1	9
56996	B4003754		5805-01-129-1518	2	10
81349	CE13C330R		5910-00-466-3550	3	5
44655	F229		5905-00-076-6010	2	20
44655	F235		5905-01-145-0406	2	19
81349	JAN1N4249		5961-00-082-4073	3	4
14949	J72D		5935-01-057-2703	2	6
81349	LH73/1-LC12GN2		6210-00-724-2447	2	4
96906	MIL-L-15098/11-0 001			2	26
56996	MPB10356			3	7
96906	MS15795-806		5310-00-880-5976	1	6
96906	MS20470A3-3		5320-00-721-8973	1	5
96906	MS25257-4		6210-00-808-8604	2	18
96906	MS27183-4		5310-00-950-1310	2	36
96906	MS27183-5		5310-00-983-8483	2	35
				3	9
96906	MS35058-30		5930-00-655-1522	2	9
96906	MS35214-12		5305-00-637-5884	2	39
96906	MS35214-19		5305-00-059-8244	2	40
96906	MS35214-25		5305-00-206-3716	2	28
96906	MS35214-27		5305-00-206-1288	3	8
96906	MS35214-5		5305-00-812-3549	2	42
96906	MS35333-104		5310-00-939-1061	2	37
96906	MS35338-96		5310-00-184-8990	2	43
96906	MS35338-97		5310-00-184-8996	2	33
96906	MS35338-98		5310-00-184-8977	2	30
				3	10
96906	MS35649-225		5310-00-934-9740	2	41
				2	44
96906	MS35649-265		5310-00-934-9763	2	31
				3	11
96906	MS35650-344		5310-00-938-2012	2	34
96906	MS51957-45		5305-00-054-6670	1	8
96906	MS51958-15		5305-00-057-0512	2	32
96906	MS75028-22		5930-00-943-4957	2	21
96906	MS75029-23		5930-00-947-8318	2	7
96906	MS77068-2		5940-00-827-2653	2	29
96906	MS91528-IP2B		5355-00-616-9604	2	1
14278	N06-5-3/4-6D			1	7
71590	PA-6012		5930-01-138-9675	2	11
56996	PADNEOPRENE			2	16
08779	PC-230-100		5950-01-132-1618	2	15
14949	PTW-36-78		5995-01-175-5124	1	3
81349	RCR42G473JS		5905-00,874-0147	3	3
81349	RWR74S1002FR		5905-00-147-9852	3	2
81349	SE109D01		5940-00-615-6475	2	38
80063	SM-8-552124		5975-00-926-3073	2	12

NATIONAL STOCK NUMBER AND PART NUMBER INDEX

FSCM	PART NUMBER	PART NUMBER INDEX		FIG.	ITEM
			STOCK NUMBER		
82389	TT-126		5995-00-437-6140	1	2
82389	TT-328		5935-01-017-8155	2	2
12969	UZ5114		5961-00-432-9285	2	22
12969	UZ5136		5961-00-465-8224	2	23
83330	1498-102		5935-01-013-2410	2	5
16428	17238		6150-00-071-1179	2	13
05276	1959-36		6625-00-362-7528	1	1
08779	24BR			2	14
05820	258		5999-00-492-2123	2	24
75915	342-104		5920-01-161-8119	2	17
08806	344		6240-00-722-6467	2	3
44655	4442		5905-00-994-7292	3	1
07342	803877		5920-00-878-5571	2	27
83330	8262		5340-01-077-3555	2	8
83330	842		5340-00-767-8078	3	6

By Order of the Secretaries of the Army, the Navy and the Air Force:

Official:

JOHN A WICKHAM, JR.
General, United States Army
Chief of Staff

DONALD J. DELANDRO
Brigadier General, United States Army
The Adjutant General

G. B. SCHICK, JR.
Rear Admiral, United States Navy
Commander, Naval Electronic
Systems Command

Official:

EARL T. O' LOUGHLIN
General, USAF, Commander, Air Force
Logistics Command

CHARLES A. GABRIEL
General, USAF
Chief of Staff

DISTRIBUTION:

To be distributed in accordance with DA Form 12-51A-1, Organizational Maintenance and Direct and General Support Maintenance requirements for AN/TTC-39.

RECOMMENDED CHANGES TO EQUIPMENT TECHNICAL PUBLICATIONS



THEN . . . JOT DOWN THE
DOPE ABOUT IT ON THIS
FORM, CAREFULLY TEAR IT
OUT, FOLD IT AND DROP IT
IN THE MAIL!

SOMETHING WRONG WITH THIS PUBLICATION?

FROM: (PRINT YOUR UNIT'S COMPLETE ADDRESS)

DATE SENT

PUBLICATION NUMBER

PUBLICATION DATE

PUBLICATION TITLE

BE EXACT . . . PIN-POINT WHERE IT IS

PAGE
NO

PARA-
GRAPH

FIGURE
NO

TABLE
NO

IN THIS SPACE TELL WHAT IS WRONG
AND WHAT SHOULD BE DONE ABOUT IT:

TEAR ALONG PERFORATED LINE

PRINTED NAME, GRADE OR TITLE, AND TELEPHONE NUMBER

SIGN HERE:

DA FORM 2028-2
1 JUL 79

PREVIOUS EDITIONS
• ARE OBSOLETE.

P.S.—IF YOUR OUTFIT WANTS TO KNOW ABOUT YOUR
RECOMMENDATION MAKE A CARBON COPY OF THIS
AND GIVE IT TO YOUR HEADQUARTERS.

PIN NO: 056105-000